

Venture News

In This Issue:

- Camino Del Rio—An ECO-Based Community of the Future
- Location, Location
- Camino Recipe
- Belize History—Part 1
- Share Your Story

Sections

TAREIG News	1
Project Spotlight	2
Belize Feature	3
Closing Note/Owner Spotlight	4

TAREIG/Local Country News

CAMINO DEL RIO—AN ECO BASED COMMUNITY OF THE FUTURE

The great American Architect Franklin Lloyd Wright, was well known for integrating the homes that he designed into nature. One of his most notable homes, Fallingwaters in southwestern

park is your home” personifies this by intermingling nature trails throughout both the residential and recreational areas of the compound. Over six miles



Camino Del Rio—An eco-based community of the future

Pennsylvania represented what he described his architectural style as “organic - in harmony with nature”. Though Fallingwater reveals designs drawn from the International style in certain aspects, this country house exhibits so many features typical of Wright's natural style of a house very much engaged with its surroundings.

The Camino Del Rio community, inspired by a similar vision, integrates the homes with nature and its local surroundings. “Where a walk in the

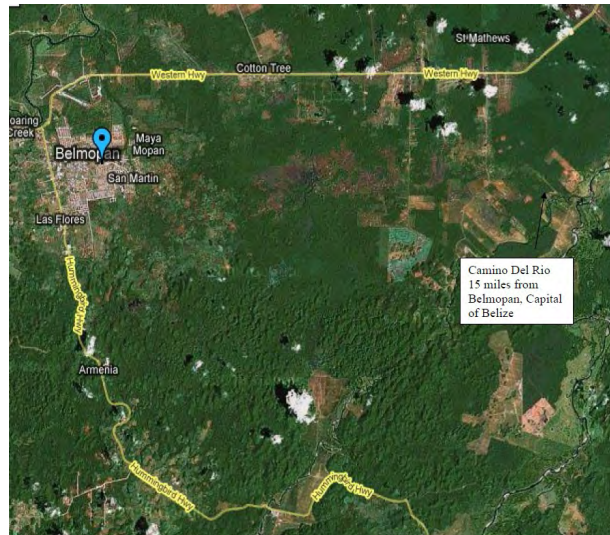
of hiking trails meander in and around the perimeter and are also used as a border in-between many of the spacious home-sites. The named trails such as the Hilario Teak Trail and the Paulino Jungle Trail provide for the most scenic areas along the Maya/Joshua Creeks and the Caves Branch River. Nowhere else in Belize is there a community that integrates its natural surroundings as incorporated into the layout at Camino Del Rio.

Project Spotlight
LOCATION, LOCATION

*Camino Del Rio is
 Central to everything
 in Belize*

Current trends in the development of residential communities worldwide provide owners with central services for many amenities that they desire. Regardless of its urban or countryside

location ideal for access to everything great about Belize. Local supermarkets, restaurants, vacation adventure, and medical services have grown in the area during the last few years, providing easy access to many comforts that residents



and visitors to the area enjoy. As awarded the best residential community in Belize for 2009 by America's Residential Properties, one of Camino Del Rio's key winning factors was its multi-use of space for residents incorporating residential, recreational, and potential onsite services provided by local businesses. Although the hub of onsite services are targeted to be housed in the future community center area, other business services may become available within the resi-

dential space by some of Camino's own residents. As new owners begin the construction of their residences. Camino's location to nearby Belmopan provides for a location that is convenient to everything you need in Belize. Belmopan is the capital of Belize and with the opening of the Tropic Air airline, provides an opportunity to quickly and easily get around the countryside from a conven-

location, close proximity to nearby residential, commercial, and onsite services are key features that are sought in up and coming communities. The vision for Camino Del Rio encompasses these trends with its convenient mid-country location and provisions for future onsite services. Its proximity to Belize's capital of Belmopan and nearby nature activities makes its Franks Eddy Village loca-

CAMINO RECIPE

Camino Stew

Ingredients:

- 1 whole chicken
- 4 cups of chicken broth or water
- 1 16.oz can of tomatoes or 4 cups freshly chopped tomatoes
- 3 medium yucas* peeled, deveined and chopped
- 1 cup onion, roughly chopped
- 2 cups chopped caya leaves*
- Salt, pepper to taste and other spices of your choice

* plentiful onsite at Camino Del Rio

Directions:

Combine all ingredients in a large pot. Cook over low heat for at least 3 hours until the meat falls from the bone. Stir frequently and remove the bones before serving.

This is a favorite dish to make and allow to let simmer when you first arrive at Camino. Pick up the chicken, onions, and tomatoes on the way in from the airport right at R&D's supermarket in the Franks Eddy village. Once you un-pack, prepare and let the aromas of Belize fill the house. Can be served with rice or tortilla chips or just as a hearty stew.

*History/Activity Spotlight***THE HISTORY OF BELIZE – PART 1 OF A MULTI-SERIES**

Belize has a rich history melting many cultures into one eco-diverse area

Belize, a country that dates back thousands of years originated as part of the Maya civilization when they spread into the area 1500 BC. Several major archeological sites— notably Cahal pech, Caracol, Lamanai, Lubaantum, Altun Ha, and Xunantunich— reflect the advanced civilization and



English seamen in 1638. Over the next 150 years, more English settlements were established.

Great Britain first sent an official representative to the area in the late 18th century, but the area was not formally termed the "Colony of British Honduras" until 1840. It became a crown colony in 1862. Subsequently, several constitutional changes were enacted to expand representative government. Full internal self-government under a ministerial system was granted in January 1964. The official name of the territory was changed from British Honduras to Belize in June 1973, and full independence was granted on September 21, 1981.

Situated on the northeastern coast of Central America, it is the only country in the area that has English as the official language, though an English creole (Kriol) and Spanish are more commonly spoken. Belize is bordered

on the north by Mexico, to the south and west by Guatemala, and to the east by the Caribbean Sea. Its mainland is about 290 km (180 mi) long and 110 km (68 mi) wide.

With 22,800 square kilometres (8,800 sq mi) of land and a population of only 334,297 (2013 est.), Belize has the lowest population density in Central America. The country's population growth rate of 1.97% per year (2013) is the second highest in the region and one of the highest in the western hemisphere. Belize's abundance of terrestrial and marine species and its diversity of ecosystems give it a key place in the globally significant Biological Corridor.

Belize has a diverse society, with many cultures and languages. Originally part of the British Empire, it shares a common colonial history with other Anglophone Caribbean countries. From 1862 to 1973, its name was British Honduras. It became an independent Commonwealth realm in 1981, retaining Queen Elizabeth II as head of state.

In general, Belize is considered a Central American and Caribbean nation with strong ties to the entire Latin American and Caribbean region. Belize is a member of the Caribbean Community (CARICOM), the Community of Latin American and Caribbean States (CELAC), and the Central American Integration System (SICA), the only country to hold full membership in all three regional organizations

Upcoming Newsletters will explore the history of Belize, from its ancient Mayan Civilization to its current multi-cultural residents.



Visit us online at www.tareig.com

THE ADVENTURE REAL ESTATE INVESTMENT GROUP

Corporate Office
9900-E Greenbelt Road
Suite 200
Lanham, MD 20706

Phone: +1(800) 895-6924
Fax: +1(866) 650-6189
E-mail: info@tareig.com

Copyright 2013 TAREIG, LLC.

TAREIG, LLC, The Adventure Real Estate Investment Group, is a Maryland based real estate development and management company created to pursue domestic and foreign real estate investment opportunities. The target for real estate development activities is on small to medium sized projects in emerging destinations that are in the early stages of development for tourism and residential community living. Projects include the building of resorts, single family, and multi-unit residential and vacation home communities that incorporate ecological-based designs to maintain and/or enhance the natural features of the property.

OUR PROJECTS:

- Utilize environmentally sound preservation practices,
- Emphasize local community involvement and community service support,
- Provide for a network of other TAREIG corporate owned and commercial developed projects.

MISSION

The mission of TAREIG, LLC is to develop unique and high quality real estate projects that are situated near outdoor adventure and tourist attractions in emerging travel destination areas.

VISION

Our vision is to create a network of TAREIG properties through land development and reciprocal arrangements with other similar high quality residential and vacation development communities and resorts throughout the world.

CORPORATE PHILOSOPHY

Offer quality products and a satisfying customer experience.

Closing Note

CAMINO COMMUNITY – SHARE YOUR PHOTOS AND STORIES

As the Camino Del Rio begins to take on its place in the history of Belize, we want to share stories from owners and investors from its origins and as we grow. Camino Del Rio is a special place and in many years to come, there will be great stories to tell. Send us your stories and/or photos of your visits to Belize and information on any of the topics below:

- Visits to Belize
- Visits to Camino Del Rio
- Your input on visions for the Camino Community
- Your Family and Interests

With your story, also provide the following: (email to info@tareig.com)



The lush landscape at Camino

- Owner Names
- Current home location
- Year of first visit to Belize
- Do you plan to live full or part-time at Camino?

A copy of the story will be sent to you for review and approval prior to any publication or release.