

# Venture News

**In This Issue:**

- New Camino Jungle Trail
- Oil in Belize
- Second Model Home Under Construction
- Project Photos
- Canine Additions

## JUNGLE TRAIL OFFERS GREAT RIVER VIEWS

'Where a walk in the park' is the theme at Camino Del Rio, a new foot trail has been added to the miles of walking trails throughout the community. Nature trails for walking, bird watching and eventually biking are part of the central focus to allow home owners to get out and enjoy the natural surroundings. Easy access to the creeks and river is a key component to the master plan and community layout and the new jungle trail known as the 'Paulino Jungle Trail' adds to the beauty of the park theme. The new trail connects from the existing 'Hilario Teak Trail' on the recreational side of the

community and weaves in and out of the Maya Creek and Caves Branch River. With lots of rain forest canopy to walk through, the trail first crosses over the Maya creek on an old fashioned footbridge. After passing through a number of native hardwood trees the trail opens up to an inviting sitting area with breathtaking views of the Caves Branch River. Benches are placed at convenient and scenic locations along the path to allow guests to sit and admire the natural surroundings. Next time you're in Belize, take some time out for a hike along the trail.



*Foot bridge along the trail*

*New jungle trail area along the river and creek*



*New trail starts near current bird-watch tower*

## BELIZE'S NEW FIND—OIL

Near a small Mennonite town, a farmer dug a shallow water well a few years ago and found a viscous black liquid seeping into the water. Now Belize is the newest exporter of oil to the United States, a development that is starting to upend this small country of 280,000 people. With over 50 attempts by other small and large oil companies in the last 49 years, Belize Natural Energy (BNE), a small company backed by investors from Ireland and Colorado, struck oil in its first drilling attempt. Their wells are producing 2,000 barrels a day of oil similar in quality to the

low-sulfur crude from the oil fields of West Texas. The oil is low in impurities making it relatively easy to process into fuel. BNE plans to import a small plant that would enable it to produce diesel fuel from crude locally, which would alleviate the country's need to import some of



*Oil Rig in Spanish Lookout*

its refined fuel. BNE plans to work its business for the development of Belize that would allow Belizeans a share in the company. Should BNE be successful it would provide new opportunities for the country. With the price of crude oil growing, any exports would yield some significant foreign exchange. The company is also channeling one percent of its revenue to a fund for protecting the country's fragile environment, which is about 40 percent jungle.

**Sections**

TAREIG In the News	1
Local Country News	1
Project Spotlight	2
Project Schedule and Update	2
Photo Gallery	3

*The Hummingbird Model is expected to be the most popular and best value*

## CAMINO SECOND MODEL HOME UNDER CONSTRUCTION

Camino Del Rio's latest home construction project has been initiated with the ground-breaking of the Hummingbird Model. This one level home with two bedroom, one to one and one half bath unit boasts a comfortable and spacious layout with an open free-flowing kitchen, dining, and living room area.

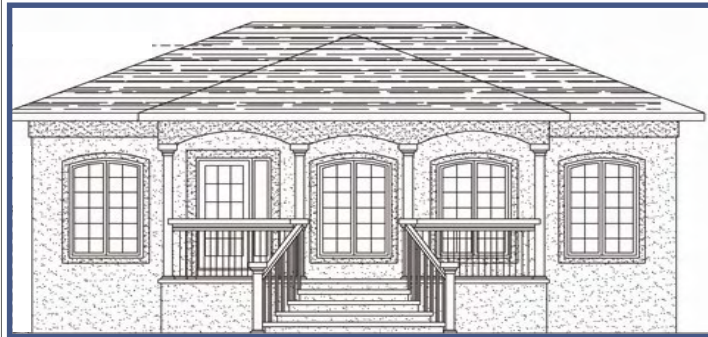
Three elevations provide for a unique styling that represents a combination of Caribbean and Mediterranean architecture. Although this is the smallest single home design within the plans available for Camino Del Rio, lots of windows provide for a very airy feel within its 1000 square foot space. Floor plan options include a garage, powder room, and a larger front bedroom area extension. This model is expected to be the

most popular with the greatest value starting at only \$135,000.



*Hummingbird Model Home Under Construction*

### Front elevation—Option 3



### **The Hummingbird**

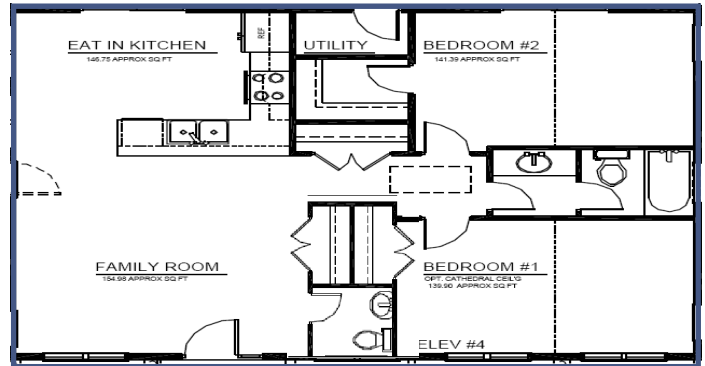
**2 bedroom**

**1 or 1.5 bath**

**Starting at \$135,000\***

*\*Elevation as shown is \$149,000*

*Price is based on the home constructed on a one-quarter acre parcel. Final construction price may be lower for previously purchased lots or higher for larger sized parcels*



## MODEL HOME CONSTRUCTION TIME TABLE

<b>Activity</b>	<b>Timeline</b>
Foundation Initiated	Complete
Exterior Walls Complete	In Process
Roof Complete	January
Home Interior Complete	March
Model Home Ready	April

*Visit [www.caminodelriobelize.com](http://www.caminodelriobelize.com) for more information about this project or if you are interested in owning your piece of paradise in Belize.*



## PHOTO GALLERY (Aerial views and completed model home)



*Aerial view from the road*



*Aerial view of the front entrance*

*In just one year  
Camino Del Rio has  
installed the base  
infrastructure along  
with new homes for its  
residents*



*Front View of the Pelican Model—  
Elevation 4*



*Back View of Pelican Model*



*Hall Bathroom*



*Kitchen with Eat-in Area*



*Dining Room Area*



*Master Bedroom*



TAREIG, LLC, The Adventure Real Estate Investment Group, is a Maryland based real estate development and management company created to pursue domestic and foreign real estate investment opportunities. The target for real estate development activities is on small to medium sized projects in emerging destinations that are in the early stages of development for tourism and residential community living. Projects include the building of resorts, single family, and multi-unit residential and vacation homes communities that incorporate ecological-based designs to maintain and/or enhance the natural features of the property.

#### **Our projects:**

- Utilize environmentally sound preservation practices
- Emphasize local community involvement and community service support
- Provide for a network of other TAREIG corporate owned and commercial developed projects

#### **MISSION**

The mission of TAREIG, LLC is to develop unique and high quality real estate projects that are situated near outdoor adventure and tourist attractions in emerging travel destination areas.

#### **VISION**

Our vision is to create a network of TAREIG properties through land development and reciprocal arrangements with other similar high quality residential and vacation development communities and resorts throughout the world.

#### **CORPORATE PHILOSOPHY**

Offer quality products and a satisfying customer experience.

Visit us online at  
[www.tareig.com](http://www.tareig.com)

The Venture is published quarterly by TAREIG, LLC. Input and ideas on articles for publishing are welcomed

Contributors:  
Marcia Fairweather  
William Braaf

Editorial Review:  
Robert Hughes

**THE ADVENTURE REAL ESTATE  
INVESTMENT GROUP**

**Corporate Office**  
9900-E Greenbelt Road  
Suite 200  
Lanham, MD 20706

**Phone:** +1(800) 895-6924  
**Fax:** +1(800) 895-6924  
ext. 5  
**E-mail:** [info@tareig.com](mailto:info@tareig.com)

Copyright 2007, TAREIG, LLC.

## **NEW ADDITIONS TO THE CAMINO FAMILY**

As part of the Camino Del Rio security and patrol system, monitoring components, a police task force, and canine patrol are in place to offer the highest amount of protection and preventative security. Since October 2006, the four unit canine patrol consisted of two 24 by 7 onsite mixed rotweiler breeds, and two daytime mixed shepherd breeds. Kamino, the female mixed Doberman/ Rotweiler canine recently birthed three male pups in September to add to the growing canine security task force.

The new additions are known as Benji, Vador, and Chiko. Although still weaning from mama Kamino, they are beginning to venture out onto the property to learn the lay of the land. The pups are learning to 'bark' as they practice on all new comers that enter the premises through the front gate. Eventually they will be placed at various locations for the evening patrols or where needed.

Doberman, Rotweiler and Shepherd breeds are well-known for their protective instincts. The breeds originating in Germany have a

long historical use for protection and are regarded as excellent working dogs and have been used as watch dogs in many establishments for security purposes. The canine unit is being trained by Paulino Corrado, one of Camino's current workers who has provided canine training for over 15 years.



*Vadar and Benji at 2 months*